

ZTA.35.Mains Track.Framer

STD-000597-0041

Configured Product

Light Source

SL90

Light Source Size

4mm LES

CCT

2400K

Finish

Matt Black

Track adaptor colour

White

Dimming

Local Dim

Gobo Holder

No

Softening Diffuser/Accessory

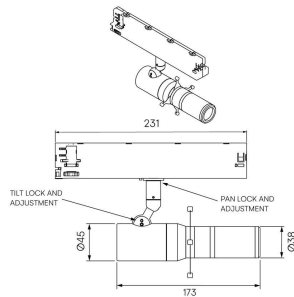
Yes

Framer Type

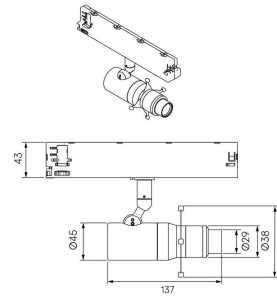
Adjustable Beam



ZTA.35.MAINS TRACK.FRAME - ADJUSTABLE BEAM



ZTA.35.MAINS TRACK.FRAME - FIXED BEAM



Modular high-performance, mains track-mounted spotlight system, for interior architectural applications such as Museums, Galleries, Retail and Workplace environments. Engineered for exceptional durability, maintainability, re-manufacturability, and recyclability, this spotlight sets a new standard for sustainable design.

Easily interchangeable between fixed, Zoom optics and Framer attachments.

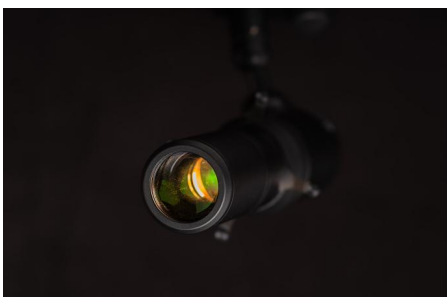
Product Description

Compatible with 3-circuit adapters for 120–277V Stucchi, Eutrac, Global Pulse, and other track systems, this spotlight includes integral dimming control gear.

Fixed uses a Wide Flood spread for long throws. Adjustable uses a Zoom lens to allow the user to narrow in on very fine details. Both are capable of holding a gobo.

Key Features

- Sustainable construction: made from recycled aluminium with a long-lasting anodised and powder-coated finish.
- Framing attachment can be easily swapped to fixed optics, Zoom and Wall Wash.
- The easy-to-adjust fins allow for precision positioning to sharply define light on pieces of artwork.
- Versatile adjustment: 363° pan rotation and 130° tilt with a lockable spot.
- Broad compatibility: 3-circuit adapter supports multiple track systems (Stucchi, Eutrac, Global Pulse).
- High-performance lighting: up to 98 CRI LEDs with interchangeable optical systems.
- Advanced dimming options: DALI, 0–10V, DMX and Wireless dimming, down to 0.1%.



Compliance



Technical

Supply	230V/240V via 3 circuit track	
Light source	4mm LES COB	6mm LES COB
Initial output	SL98 4.3W 17.2Vf at 250mA	SL98 8.6W 34.4Vf at 250mA
	2700K · 418lm · 97lm/W	2700K · 863lm · 100lm/W
	3000K · 446lm · 104lm/W	3000K · 923lm · 107lm/W
	3500K · 446lm · 104lm/W	3500K · 923lm · 107lm/W
	4000K · 471lm · 110lm/W	4000K · 974lm · 113lm/W
Light distribution	Adjustable 15.7° - 32.5° Fixed 50.2°	Adjustable 15.6° - 31.7° Fixed 50°
Lumen maintenance	L90 B0 in excess of 94,000 hours	
Colour consistency	2 SDCM	
IP rating	IP20	
Weight	0.65kg	

Service Commitment

