

ZTA.70.Mains Track.Wall Wash

STD-000586-0029

Configured Product

Light Source

SL98

Light Source Size

14mm LES

CCT

3000K

Finish

Matt Black

Track adaptor colour

Black

Dimming

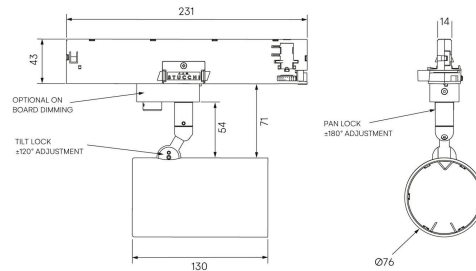
Local Dim

Attachments

None

Secondary Lensing Accessories

Without accessories



Modular high-performance, mains track-mounted spotlight system, for interior architectural applications such as Museums, Galleries, Retail and Workplace environments. Engineered for exceptional durability, maintainability, re-manufacturability, and recyclability, this spotlight sets a new standard for sustainable design.

Product Description

ZTA.70.Mains Track.Wallwash is constructed from extruded and precision-machined recycled aluminium, the spotlight features an anodised and powder-coated finish for enhanced durability and aesthetics. Compatible with 3-circuit adapters for 120-277V Stucchi, Eutrac, Global Pulse, and other track systems, this spotlight includes integral dimming control gear.

The spotlight can accommodate up to two lens accessories and multiple attachments, making it highly customisable for various lighting needs.

Key Features

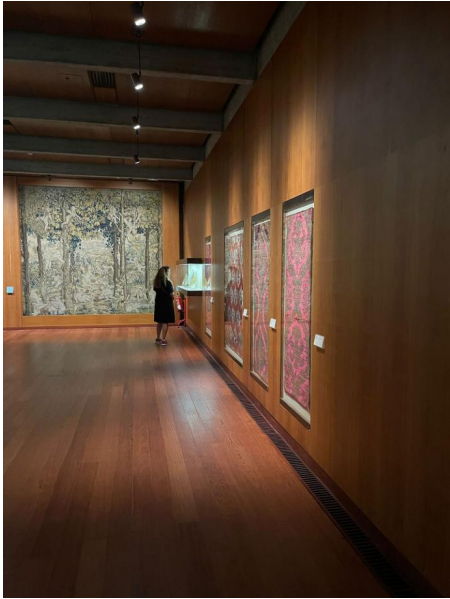
- Sustainable construction: made from recycled aluminium with a long-lasting anodised and powder-coated finish. Specialist finishes available on request.
- Versatile adjustment: 363° pan rotation and 130° tilt with a lockable spot.
- Broad compatibility: 3-circuit adapter supports multiple track systems (Stucchi, Eutrac, Global Pulse).
- Advanced dimming options: on-board, DALI, 0-10V, and Wireless dimming, down to 0.1%.
- High-performance lighting: Up to 98 CRI LEDs.
- Customisable accessories: Can house up to two lens accessories and various attachments.
- Ceiling mounting only: designed exclusively for ceiling installations.

STOANE LIGHTING

EQUIPMENT DESIGN + MANUFACTURE

ZTA.70.Mains Track.Wall
Wash

STD-000586-0029



Compliance



Technical

Supply	230V/240V via 3 circuit track
Light source	14mm LES COB
Initial output	SL90 17.2W 34.3Vf at 500mA 2700K · 2613lm · 152lm/W 3000K · 2736lm · 159lm/W 3500K · 2768lm · 161lm/W 4000K · 2751lm · 160lm/W SL98 18.1W 33Vf at 550mA 2700K · 2129lm · 118lm/W 3000K · 2274lm · 126lm/W 3500K · 2337lm · 129lm/W 4000K · 2388lm · 132lm/W
Light distribution	Wall Wash 78.1° x 33.2°
Lumen maintenance	L90 B0 in excess of 94,000 hours
Colour consistency	2 SDCM
IP rating	IP20
Weight	0.9kg

STOANE LIGHTING

EQUIPMENT DESIGN + MANUFACTURE

ZTA.70.Mains Track.Wall

Wash

STD-000586-0029

Service Commitment

