

## ZTA.50.Mains Track.Zoom

STD-000572-0040

### Configured Product

Light Source

SL98

Light Source Size

6mm LES

CCT

3000K

Finish

RAL 9010 Pure White

Track adaptor colour

White

Dimming

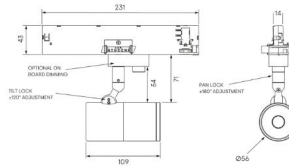
Local Dim

Attachments

None

Secondary Lensing Accessories

Without accessories



Modular high-performance, mains track-mounted spotlight system, for interior architectural applications such as Museums, Galleries, Retail and Workplace environments. Engineered for exceptional durability, maintainability, re-manufacturability, and recyclability, this spotlight sets a new standard for sustainable design.

**Product Description**

ZTA.50.Mains Track.Zoom is constructed from extruded and precision-machined recycled aluminium, the spotlight features an anodised and powder-coated finish for enhanced durability and aesthetics. Easily interchangeable between fixed optic, Wall Wash and Framing projector options.

**Key Features**

- Sustainable construction: made from recycled aluminium with a long-lasting anodised and powder-coated finish. Specialist finishes available on request.
- Zoom optics can be easily swapped to Fixed, Wall Wash and additional framer attachments.
- Versatile Adjustment: 363° pan rotation and 130° tilt with a lockable spot.
- Broad compatibility: 3-circuit adapter supports multiple track systems (Stucchi, Eutrac, Global Pulse).
- Advanced dimming options: On-board, DALI, 0-10V, and Wireless dimming, down to 0.1%.
- High-performance lighting: up to 98 CRI LEDs with interchangeable optical systems.
- Customisable accessories: can house up to one lens accessory and various attachments.
- Ceiling mounting only: designed exclusively for ceiling installations.

**Compliance**



# Technical

Supply	230V/240V via 3 circuit track
Light source	6mm LES COB
Initial output	<p><b>SL90</b> 8W 32Vf at 250mA</p> <p>2700K · 1087lm · 136lm/W            3000K · 1133lm · 141lm/W            3500K · 1144lm · 143lm/W            4000K · 1175lm · 147lm/W</p> <p><b>SL98</b> 8.6W 34.4Vf at 250mA</p> <p>2700K · 863lm · 100lm/W            3000K · 923lm · 107lm/W            3500K · 923lm · 107lm/W            4000K · 974lm · 113lm/W</p>
Light distribution	Zoom 13.7° - 48.1°
Lumen maintenance	L90 B0 in excess of 94,000 hours
Colour consistency	2 SDCM
IP rating	IP20
Weight	0.56kg

## Service Commitment

