

ZTA.50.Mains Track.Zoom

STD-000572-0036

Configured Product

Light Source

SL90

Light Source Size

6mm LES

CCT

2700K

Finish

TBC

Track adaptor colour

TBC

Dimming

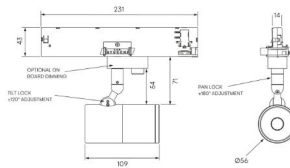
TBC

Attachments

TBC

Secondary Lensing Accessories

TBC



Modular high-performance, mains track-mounted spotlight system, for interior architectural applications such as Museums, Galleries, Retail and Workplace environments. Engineered for exceptional durability, maintainability, re-manufacturability, and recyclability, this spotlight sets a new standard for sustainable design.

Product Description

ZTA.50.Mains Track.Zoom is constructed from extruded and precision-machined recycled aluminium, the spotlight features an anodised and powder-coated finish for enhanced durability and aesthetics. Easily interchangeable between fixed optic, Wall Wash and Framing projector options.

Key Features

- Sustainable construction: made from recycled aluminium with a long-lasting anodised and powder-coated finish. Specialist finishes available on request.
- Zoom optics can be easily swapped to Fixed, Wall Wash and additional framer attachments.
- Versatile Adjustment: 363° pan rotation and 130° tilt with a lockable spot.
- Broad compatibility: 3-circuit adapter supports multiple track systems (Stucchi, Eutrac, Global Pulse).
- Advanced dimming options: On-board, DALI, 0-10V, and Wireless dimming, down to 0.1%.
- High-performance lighting: up to 98 CRI LEDs with interchangeable optical systems.
- Customisable accessories: can house up to one lens accessory and various attachments.
- Ceiling mounting only: designed exclusively for ceiling installations.

Compliance



Technical

| | |
|--------------------|---|
| Supply | 230V/240V via 3 circuit track |
| Light source | 6mm LES COB |
| Initial output | SL90 8W 32Vf at 250mA 2700K · 1087lm · 136lm/W 3000K · 1133lm · 141lm/W 3500K · 1144lm · 143lm/W 4000K · 1175lm · 147lm/W SL98 8.6W 34.4Vf at 250mA 2700K · 863lm · 100lm/W 3000K · 923lm · 107lm/W 3500K · 923lm · 107lm/W 4000K · 974lm · 113lm/W |
| Light distribution | Zoom 13.7° - 48.1° |
| Lumen maintenance | L90 B0 in excess of 94,000 hours |
| Colour consistency | 2 SDCM |
| IP rating | IP20 |
| Weight | 0.56kg |

Service Commitment

