

# STOANE LIGHTING

EQUIPMENT DESIGN + MANUFACTURE

## Croc

STD-000537-0101

### Configured Product

Light Source

SL90

Light Source Size

14mm LES

CCT

3000K

Beam

Flood 33.7°

Finish

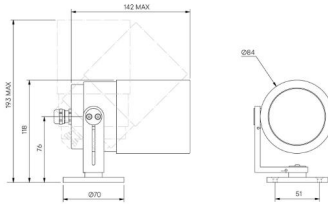
XAL Classic 34 Bronze

Attachments

Straight/Slash Cut Snoot (specified separately)

Secondary Lensing Accessories

With accessories



High-performance exterior spotlight system, for ceiling and wall mounting to illuminate exterior architectural details and landscape illumination.

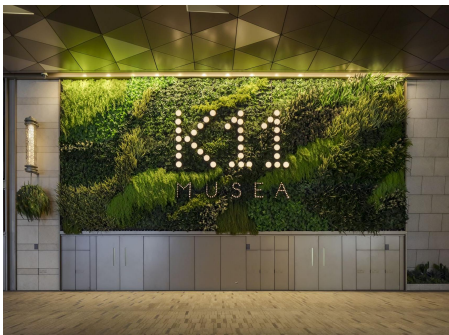
### Product Description

The Croc is a high power IP66 exterior rated, adjustable and lockable spotlight.

Constructed from precision-machined recycled aluminium, the spotlight features an anodised and powder-coated finish for enhanced durability and aesthetics. Provided with interchangeable optics from Very Narrow to Wide Flood, additional lenses can be added for glare control or to create elliptical beam spreads.

### Key Features

- Sustainable construction: made from recycled aluminium with a weather resistant long-lasting anodised and powder-coated finish. Specialist finishes available on request.
- Fixed optics can be easily swapped from Very Narrow to Flood options, capable of holding up to two additional lens accessories.
- Snoot and Cowl options available.
- Tree and Spike mounted options available.
- Advanced dimming options: DALI, 0-10V, DMX and Wireless dimming, down to 0.1%.
- High-performance lighting: up to 98 CRI LEDs with interchangeable optical systems.



## Compliance



## Technical

### Supply

Remote constant current LED driver required

### Light source

6mm LES COB

9mm LES COB

14mm LES COB

### Initial output

**SL90** 8W 32Vf at 250mA  
 2700K · 1087lm · 136lm/W  
 3000K · 1133lm · 141lm/W  
 3500K · 1144lm · 143lm/W  
 4000K · 1175lm · 147lm/W

**SL98** 8.6W 34.4Vf  
 at 250mA  
 2700K · 863lm · 100lm/W  
 3000K · 923lm · 107lm/W  
 3500K · 923lm · 107lm/W  
 4000K · 974lm · 113lm/W

**SL90** 11.8W 33.8Vf  
 at 350mA  
 2700K · 1822lm · 154lm/W  
 3000K · 1908lm · 161lm/W  
 3500K · 1929lm · 163lm/W  
 4000K · 1919lm · 162lm/W

**SL98** 10.6W 30.4Vf  
 at 350mA  
 2700K · 1205lm · 113lm/W  
 3000K · 1288lm · 121lm/W  
 3500K · 1313lm · 124lm/W  
 4000K · 1352lm · 127lm/W

**SL90** 17.2W 34.3Vf  
 at 500mA  
 2700K · 2613lm · 152lm/W  
 3000K · 2736lm · 160lm/W  
 3500K · 2768lm · 161lm/W  
 4000K · 2751lm · 160lm/W

**SL98** 19.9W 33.2Vf  
 at 600mA  
 2700K · 2311lm · 116lm/W  
 3000K · 2469lm · 124lm/W  
 3500K · 2518lm · 127lm/W  
 4000K · 2592lm · 130lm/W

### Light distribution

Very Narrow 7.3°  
 Narrow 9.7°  
 Narrow 2 11.5°  
 Medium 27.3°  
 Flood 38.3°  
 Wide Flood 56°  
 Extra WF 86.8°

Very Narrow 11.2°  
 Narrow 14.6°  
 Narrow 2 15.3°  
 Medium 25.9°  
 Flood 36.7°  
 Wide Flood 55°  
 Extra WF 85.2°

Narrow 17.1°  
 Medium 21.6°  
 Medium 2 22.4°  
 Medium 3 25.3°  
 Flood 33.7°  
 Wide Flood 53°  
 Extra WF 82.7°

Lumen maintenance	L90 B0 in excess of 94,000 hours
Colour consistency	2 SDCM
IP rating	IP66
Weight	1.45kg

---

## Service Commitment

