

## Croc Spike

STD-000535-0014

### Configured Product

Light Source

Custom

Light Source Size

9mm LES

CCT

3000K

Beam

Narrow 2 15.3°

Finish

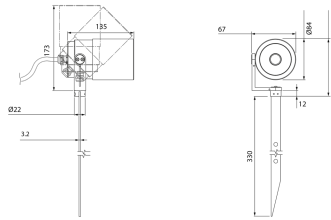
Matt Black

Attachments

Straight/Slash Cut Snoot (specified separately)

Secondary Lensing Accessories

Without accessories



High-performance exterior spotlight system, for soft landscaping to illuminate exterior architectural details and landscape illumination.

## Product Description

The Croc Spike is a high power IP66 exterior rated, adjustable and lockable spotlight.

Constructed from precision-machined recycled aluminium, the spotlight features an anodised and powder-coated finish for enhanced durability and aesthetics.

Provided with interchangeable optics from Very Narrow to Extra Wide Flood, additional lenses can be added for glare control or to create elliptical beam spreads.

## Key Features

- Sustainable construction: made from recycled aluminium with a weather resistant long-lasting anodised and powder-coated finish. Specialist finishes available on request.
- Fixed optics can be easily swapped from Very Narrow to Extra Wide Flood options, capable of holding up to two additional lens accessories.
- Snoot and Cowl options available.
- Tree and Surface mounted options available.
- Advanced dimming options: DALI, 0-10V, DMX and Wireless dimming, down to 0.1%.
- High-performance lighting: up to 98 CRI LEDs with interchangeable optical systems.

## Compliance



# Technical

<b>Supply</b>	Remote constant current LED driver required		
<b>Light source</b>	6mm LES COB	9mm LES COB	14mm LES COB
<b>Initial output</b>	<p><b>SL90</b> 8W 32Vf at 250mA</p> <p>2700K · 1087lm · 136lm/W            3000K · 1133lm · 141lm/W            3500K · 1144lm · 143lm/W            4000K · 1175lm · 147lm/W</p> <p><b>SL98</b> 8.6W 34.4Vf at 250mA</p> <p>2700K · 863lm · 100lm/W            3000K · 923lm · 107lm/W            3500K · 923lm · 107lm/W            4000K · 974lm · 113lm/W</p>	<p><b>SL90</b> 11.8W 33.8Vf at 350mA</p> <p>2700K · 1822lm · 154lm/W            3000K · 1908lm · 161lm/W            3500K · 1929lm · 163lm/W            4000K · 1919lm · 162lm/W</p> <p><b>SL98</b> 10.6W 30.4Vf at 350mA</p> <p>2700K · 1205lm · 113lm/W            3000K · 1288lm · 121lm/W            3500K · 1313lm · 124lm/W            4000K · 1352lm · 127lm/W</p>	<p><b>SL90</b> 17.2W 34.3Vf at 500mA</p> <p>2700K · 2613lm · 152lm/W            3000K · 2736lm · 160lm/W            3500K · 2768lm · 161lm/W            4000K · 2751lm · 160lm/W</p> <p><b>SL98</b> 19.9W 33.2Vf at 600mA</p> <p>2700K · 2311lm · 116lm/W            3000K · 2469lm · 124lm/W            3500K · 2518lm · 127lm/W            4000K · 2592lm · 130lm/W</p>
<b>Light distribution</b>	<p>Very Narrow 7.3°            Narrow 9.7°            Narrow 2 11.5°            Medium 27.3°            Flood 38.3°            Wide Flood 56°            Extra WF 86.8°</p>	<p>Very Narrow 11.2°            Narrow 14.6°            Narrow 2 15.3°            Medium 25.9°            Flood 36.7°            Wide Flood 55°            Extra WF 85.2°</p>	<p>Narrow 17.1°            Medium 21.6°            Medium 2 22.4°            Medium 3 25.3°            Flood 33.7°            Wide Flood 53°            Extra WF 82.7°</p>
<b>Lumen maintenance</b>	L90 B0 in excess of 94,000 hours		
<b>Colour consistency</b>	2 SDCM		
<b>IP rating</b>	IP66		
<b>Weight</b>	1.39kg		

## Service Commitment

