

## ZTA.110.Mains Track

STD-000531-0043

### Configured Product

Light Source

SL98

Light Source Size

14mm LES

CCT

3500K

Beam

TBC

Finish

Standard Painted

Track adaptor colour

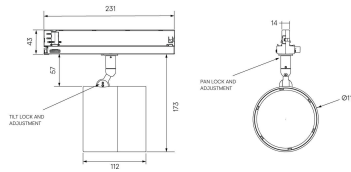
White

Dimming

Custom

Secondary Lensing Accessories

Without accessories



Modular high-performance, high-output mains track-mounted spotlight system, for interior architectural applications such as Museums, Galleries, Retail and Workplace environments. Engineered for exceptional durability, maintainability, re-manufacturability, and recyclability, this spotlight sets a new standard for sustainable design.

## Product Description

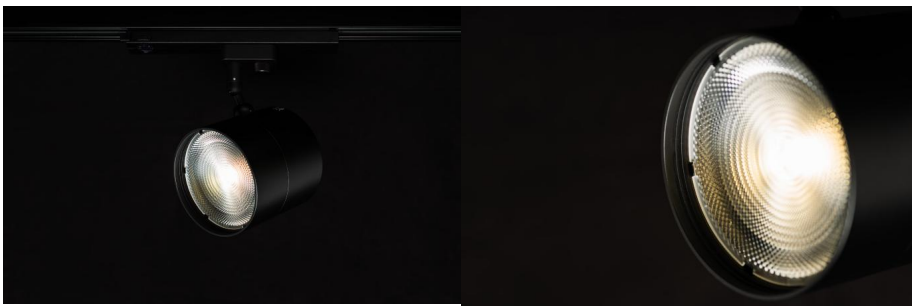
ZTA.110.Mains Track is constructed from extruded and precision-machined recycled aluminium, the spotlight features an anodised and powder-coated finish for enhanced durability and aesthetics. Compatible with 3-circuit adapters for 120-277V Stucchi, Eutrac, Global Pulse, and other track systems, this spotlight includes integral dimming control gear.

The high-performance LED module boasts up to 98 CRI and comes with Interchangeable optics ranging from Very Narrow to Wide Flood options.

The spotlight can accommodate up to two lens accessories and multiple attachments, making it highly customisable for various lighting needs.

## Key Features

- Sustainable construction: made from recycled aluminium with a long-lasting anodised and powder-coated finish. Specialist finishes available on request.
- Versatile adjustment: 363° pan rotation and 130° tilt with a lockable spot.
- Broad compatibility: 3-circuit adapter supports multiple track systems (Stucchi, Eutrac, Global Pulse).
- High-performance lighting: up to 98 CRI LEDs with interchangeable optical systems.
- Customisable accessories: can house up to two lens accessories and various attachments.
- Advanced dimming options: DALI, 0-10V, and Wireless dimming, down to 0.1%.



**STOANE LIGHTING**

EQUIPMENT DESIGN + MANUFACTURE

ZTA.110.Mains Track

STD-000531-0043

Compliance



# Technical

<b>Supply</b>	Remote constant current LED driver required	
<b>Light source</b>	6mm LES COB	14mm LES COB
<b>Initial output</b>	<p><b>SL90</b> 17.6W 35.1Vf at 500mA 2700K · 1972lm · 112lm/W 3000K · 2054lm · 117lm/W 3500K · 2074lm · 118lm/W 4000K · 2130lm · 121lm/W</p> <p><b>SL98</b> 23.2W 38.6Vf at 600mA 2700K · 1845lm · 80lm/W 3000K · 1971lm · 85lm/W 3500K · 1971lm · 85lm/W 4000K · 2081lm · 90lm/W</p>	
	<p><b>SL90</b> 28.7W 35.8Vf at 800mA 2700K · 4015lm · 140lm/W 3000K · 4204lm · 147lm/W 3500K · 4252lm · 148lm/W 4000K · 4227lm · 147lm/W</p> <p><b>SL98</b> 32.7W 34.4Vf at 950mA 2700K · 3542lm · 108lm/W 3000K · 3784lm · 116lm/W 3500K · 3888lm · 119lm/W 4000K · 3973lm · 122lm/W</p>	
<b>Light distribution</b>	Very Narrow 4.7° Narrow 10.5° Medium 24.7° Flood 34.1° Wide Flood 53.9° Extra Wide Flood 77.2°	Narrow 18.9° Medium 24.6° Flood 35.3° Wide Flood 59.8° Extra Wide Flood 78.4° Wall Wash 30.7 x 86°
<b>Lumen maintenance</b>	L90 B0 in excess of 94,000 hours	
<b>Colour consistency</b>	2 SDCM	
<b>IP rating</b>	IP20	
<b>Weight</b>	1.95kg	

## Service Commitment

