

ZTA.110.Mains Track

STD-000531-0023

Configured Product

Light Source

SL98

Light Source Size

14mm LES

CCT

3000K

Beam

Medium 24.6°

Finish

Anodised Clear

Track adaptor colour

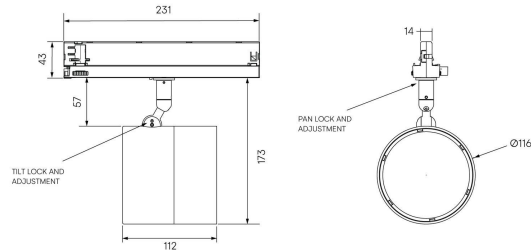
TBC

Dimming

DALI

Secondary Lensing Accessories

Without accessories



Modular high-performance, high-output mains track-mounted spotlight system, for interior architectural applications such as Museums, Galleries, Retail and Workplace environments. Engineered for exceptional durability, maintainability, re-manufacturability, and recyclability, this spotlight sets a new standard for sustainable design.

Product Description

ZTA.110.Mains Track is constructed from extruded and precision-machined recycled aluminium, the spotlight features an anodised and powder-coated finish for enhanced durability and aesthetics. Compatible with 3-circuit adapters for 120-277V Stucchi, Eutrac, Global Pulse, and other track systems, this spotlight includes integral dimming control gear. The high-performance LED module boasts up to 98 CRI and comes with Interchangeable optics ranging from Very Narrow to Wide Flood options.

The spotlight can accommodate up to two lens accessories and multiple attachments, making it highly customisable for various lighting needs.

Key Features

- Sustainable construction: made from recycled aluminium with a long-lasting anodised and powder-coated finish. Specialist finishes available on request.
- Versatile adjustment: 363° pan rotation and 130° tilt with a lockable spot.
- Broad compatibility: 3-circuit adapter supports multiple track systems (Stucchi, Eutrac, Global Pulse).
- High-performance lighting: up to 98 CRI LEDs with interchangeable optical systems.
- Customisable accessories: can house up to two lens accessories and various attachments.
- Advanced dimming options: DALI, 0-10V, and Wireless dimming, down to 0.1%.



Compliance



Technical

Supply	Remote constant current LED driver required	
Light source	6mm LES COB	14mm LES COB
Initial output	<p>SL90 17.6W 35.1Vf at 500mA</p> <p>2700K · 1972lm · 112lm/W 3000K · 2054lm · 117lm/W 3500K · 2074lm · 118lm/W 4000K · 2130lm · 121lm/W</p> <p>SL98 23.2W 38.6Vf at 600mA</p> <p>2700K · 1845lm · 80lm/W 3000K · 1971lm · 85lm/W 3500K · 1971lm · 85lm/W 4000K · 2081lm · 90lm/W</p>	<p>SL90 28.7W 35.8Vf at 800mA</p> <p>2700K · 4015lm · 140lm/W 3000K · 4204lm · 147lm/W 3500K · 4252lm · 148lm/W 4000K · 4227lm · 147lm/W</p> <p>SL98 32.7W 34.4Vf at 950mA</p> <p>2700K · 3542lm · 108lm/W 3000K · 3784lm · 116lm/W 3500K · 3888lm · 119lm/W 4000K · 3973lm · 122lm/W</p>
Light distribution	<p>Very Narrow 4.7° Narrow 10.5° Medium 24.7° Flood 34.1° Wide Flood 53.9° Extra Wide Flood 77.2°</p>	<p>Narrow 18.9° Medium 24.6° Flood 35.3° Wide Flood 59.8° Extra Wide Flood 78.4° Wall Wash 30.7 x 86°</p>

Lumen maintenance	L90 B0 in excess of 94,000 hours
Colour consistency	2 SDCM
IP rating	IP20
Weight	1.95kg

Service Commitment

