

ZTA.70.LV Track.Zoom.VN

STD-000530-0002

Configured Product

Light Source

SL90

Light Source Size

6mm LES

CCT

2700K

Finish

Matt Black

Track adaptor colour

White

Dimming

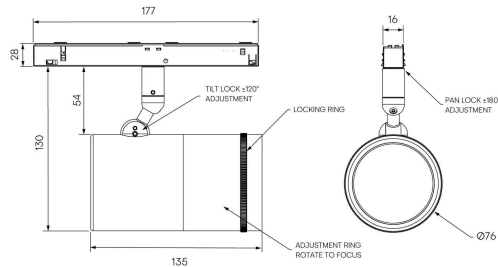
0-10V

Attachments

None

Secondary Lensing Accessories

Without accessories



Modular high-performance, low voltage track-mounted spotlight system, ideal for precise architectural lighting in Museums, Galleries, Retail and Workplace environments. Developed with long-term sustainability and reusability in mind, this spotlight achieves high technical performance without compromising environmental values.

Product Description

ZTA.70.LV Track.Zoom.VN can accommodate up to two lens accessories and multiple attachments, making it highly customisable for various lighting needs.

It features a glass zoom optic offering an **exceptionally narrow beam range of 9.5° to 57.7° providing precision illumination in sensitive or highly focused applications.**

With CRI values up to 98 and output up to 1197lm, it ensures high colour fidelity and excellent beam consistency.

Key Features

- Precision glass zoom optics: exceptionally narrow beam control from 9.5° to 57.7°, optimised for precise lighting tasks.
- Sustainable by design: constructed from recycled aluminium and designed for reusability and repair.
- Outstanding colour performance: up to 98 CRI, R9: 99, and excellent TM-30 scores.
- Smooth adjustability: 363° pan and 130° tilt with lockable positioning.
- Full dimming capability: supports local dim, DALI, 0–10V, and Wireless dimming down to 0.1%.
- Customisable accessories: Can house up to two lens accessories and various attachments.
- Ceiling mounting only: for ceiling-mounted mains track applications.



STOANE LIGHTING

EQUIPMENT DESIGN + MANUFACTURE

ZTA.70.LV Track.Zoom.VN

STD-000530-0002

Compliance



Technical

Supply Remote constant current LED driver required

Light source 6mm LES COB

Initial output **SL90** 13.6W 34Vf at 400mA

2700K · 1641lm · 121lm/W
3000K · 1710lm · 126lm/W
3500K · 1727lm · 127lm/W
4000K · 1773lm · 130lm/W

SL98 14.5W 36.4Vf at
400mA

2700K · 1313lm · 90lm/W
3000K · 1403lm · 97lm/W
3500K · 1403lm · 97lm/W
4000K · 1481lm · 102lm/W

Light distribution Narrow zoom extent 9.5°
Wide Flood zoom extent
57.7°

Lumen maintenance L90 B0 in excess of 94,000 hours

Colour consistency 2 SDCM

IP rating IP20

Weight 0.87kg

Service Commitment

