

ZTA.70.LV Track.Zoom.N

STD-000529-0008

Configured Product

Light Source

Custom

Light Source Size

Custom

CCT

Custom

Finish

RAL 9010 Pure White

Track adaptor colour

Black

Dimming

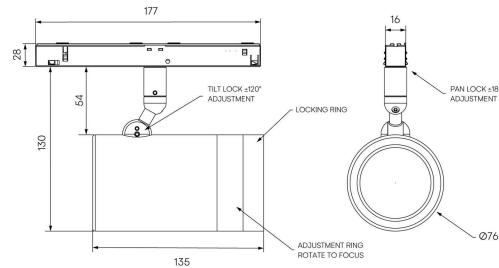
DALI

Attachments

None

Secondary Lensing Accessories

Without accessories



Modular high-performance, low voltage track-mounted spotlight system, for interior architectural applications such as Museums, Galleries, Retail and Workplace environments. Engineered for exceptional durability, maintainability, re-manufacturability, and recyclability, this spotlight sets a new standard for sustainable design.

Product Description

ZTA.70.LV Track.Zoom.N is constructed from extruded and precision-machined recycled aluminium, the spotlight features an anodised and powder-coated finish for enhanced durability and aesthetics. Compatible with 48V Stucchi Multisystem EVO track

The spotlight can accommodate up to two lens accessories and multiple attachments, making it highly customisable for various lighting needs.

This version features a **variable zoom optic range of 17.2° to 58.5° maintaining excellent beam quality throughout.** With a high output of up to 1419lm and CRI up to 98, it delivers exceptional performance for focused, adjustable illumination.

Key Features

- Sustainable construction: made from recycled aluminium with durable anodised and powder-coated finishes. Specialist finishes available on request.
- Variable zoom: adjustable beam from 17.2° to 58.5°, with smooth optical transition and minimal artefacting.
- High-output performance: delivered lumens up to 1419lm and CRI up to 98.
- Versatile adjustment: 363° pan and 130° tilt with lockable spot.
- Advanced dimming: local dim, DALI, 0-10V, and Wireless dimming options, down to 0.1%.
- Customisable Accessories: Can house up to two lens accessories and various attachments.
- Ceiling mounting only: designed exclusively for ceiling-mounted track installations.



STOANE LIGHTING

EQUIPMENT DESIGN + MANUFACTURE

ZTA.70.LV Track.Zoom.N

STD-000529-0008

Compliance



Technical

Supply	230V/240V via 3 circuit track
Light source	6mm LES COB
Initial output	SL90 13.6W 34Vf at 400mA 2700K · 1641lm · 121lm/W 3000K · 1710lm · 126lm/W 3500K · 1727lm · 127lm/W 4000K · 1773lm · 130lm/W SL98 14.5W 36.4Vf at 400mA 2700K · 1313lm · 90lm/W 3000K · 1403lm · 97lm/W 3500K · 1403lm · 97lm/W 4000K · 1481lm · 102lm/W
Light distribution	Narrow zoom extent 17.2° Wide Flood zoom extent 58.5°
Lumen maintenance	L90 B0 in excess of 94,000 hours
Colour consistency	2 SDCM
IP rating	IP20
Weight	0.81kg

Service Commitment

