

ZTA.70.Surface.Zoom.N

STD-000527-0009

Configured Product

Light Source

SL90

Light Source Size

6mm LES

CCT

3000K

Finish

Matt Black

Attachments

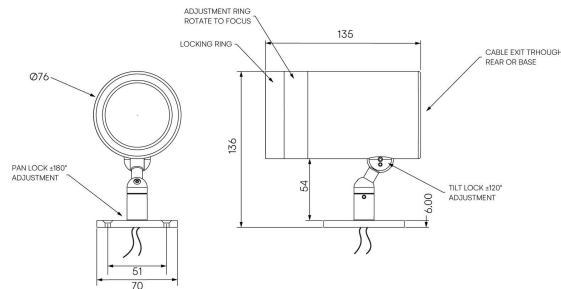
None

Cable route

Through Base

Secondary Lensing Accessories

Without accessories



Modular high-performance, surface mounted spotlight system, for interior architectural applications such as Museums, Galleries, Retail and Workplace environments. Engineered for exceptional durability, maintainability, re-manufacturability, and recyclability, this spotlight sets a new standard for sustainable design.

Product Description

ZTA.70.Surface.Zoom.N is constructed from extruded and precision-machined recycled aluminium, the spotlight features an anodised and powder-coated finish for enhanced durability and aesthetics.

The spotlight can accommodate up to two lens accessories and multiple attachments, making it highly customisable for various lighting needs.

This version features a **variable zoom optic range of 17.2° to 58.5° maintaining excellent beam quality throughout**. With a high output of up to 1419lm and CRI up to 98, it delivers exceptional performance for focused, adjustable illumination.

Key Features

- Sustainable construction: made from recycled aluminium with durable anodised and powder-coated finishes. Specialist finishes available on request.
- Variable zoom: adjustable beam from 17.2° to 58.5°, with smooth optical transition and minimal artefacting.
- High-output performance: delivered lumens up to 1419lm and CRI up to 98.
- Versatile adjustment: 363° pan and 130° tilt with lockable spot.
- Advanced dimming: local dim, DALI, 0-10V, and Wireless dimming options, down to 0.1%.
- Customisable Accessories: Can house up to two lens accessories and various attachments.
- Ceiling mounting only: designed exclusively for ceiling-mounted track installations.



STOANE LIGHTING

EQUIPMENT DESIGN + MANUFACTURE

ZTA.70.Surface.Zoom.N

STD-000527-0009

Compliance



Technical

Supply	230V/240V via 3 circuit track
Light source	6mm LES COB
Initial output	SL90 13.6W 34Vf at 400mA 2700K · 1641lm · 121lm/W 3000K · 1710lm · 126lm/W 3500K · 1727lm · 127lm/W 4000K · 1773lm · 130lm/W SL98 14.5W 36.4Vf at 400mA 2700K · 1313lm · 90lm/W 3000K · 1403lm · 97lm/W 3500K · 1403lm · 97lm/W 4000K · 1481lm · 102lm/W
Light distribution	Narrow zoom extent 17.2° Wide Flood zoom extent 58.5°
Lumen maintenance	L90 B0 in excess of 94,000 hours
Colour consistency	2 SDCM
IP rating	IP20
Weight	0.84kg

Service Commitment

