

ZTA.70.Mains Track.Zoom.VN

STD-000522-0015

Configured Product

Light Source

SL90

Light Source Size

TBC

CCT

TBC

Finish

TBC

Track adaptor colour

TBC

Dimming

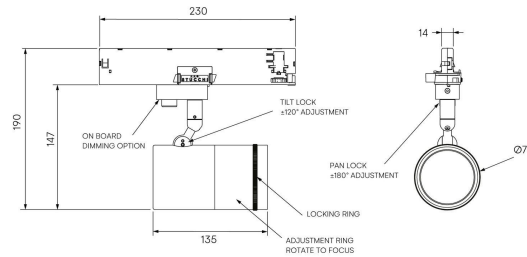
TBC

Attachments

TBC

Secondary Lensing Accessories

TBC



Modular high-performance, mains track-mounted spotlight system, ideal for precise architectural lighting in Museums, Galleries, Retail and Workplace environments. Developed with long-term sustainability and reusability in mind, this spotlight achieves high technical performance without compromising environmental values.

Product Description

ZTA.70.Mains Track.Zoom.VN is constructed from extruded and precision-machined recycled aluminium, the spotlight features an anodised and powder-coated finish for enhanced durability and aesthetics. Compatible with 3-circuit adapters for 120-277V Stucchi, Eutrac, Global Pulse, and other track systems, this spotlight includes integral dimming control gear.

The spotlight can accommodate up to two lens accessories and multiple attachments, making it highly customisable for various lighting needs.

It features a glass zoom optic offering an **exceptional beam range of 9.5° to 57.7° providing precision illumination in sensitive or highly focused applications.**

With CRI values up to 98 and output up to 1197lm, it ensures high colour fidelity and excellent beam consistency.

Key Features

- Precision glass zoom optics: exceptionally narrow beam control from 9.5° to 57.7°, optimised for precise lighting tasks.
- Sustainable by design: constructed from recycled aluminium and designed for reusability and repair.
- Outstanding colour performance: up to 98 CRI, R9: 99, and excellent TM-30 scores.
- Flexible mounting: designed for use with 3-circuit mains track systems across global standards.
- Smooth adjustability: 363° pan and 130° tilt with lockable positioning.
- Full dimming capability: supports local dim, DALI, 0-10V, and Wireless dimming down to 0.1%.
- Accessory-ready: can accept up to two lens accessories and other optical attachments.
- Ceiling mounting only: for ceiling-mounted mains track applications.

STOANE LIGHTING

EQUIPMENT DESIGN + MANUFACTURE

ZTA.70.Mains Track.Zoom.VN

STD-000522-0015

Compliance



Technical

Supply Remote constant current LED driver required

Light source 6mm LES COB

Initial output **SL90** 13.6W 34Vf at 400mA

2700K · 1641lm · 121lm/W
 3000K · 1710lm · 126lm/W
 3500K · 1727lm · 127lm/W
 4000K · 1773lm · 130lm/W

SL98 14.5W 36.4Vf at
 400mA

2700K · 1313lm · 90lm/W
 3000K · 1403lm · 97lm/W
 3500K · 1403lm · 97lm/W
 4000K · 1481lm · 102lm/W

Light distribution Narrow zoom extent 9.5°
 Wide Flood zoom extent
 57.7°

Lumen maintenance L90 B0 in excess of 94,000 hours

Colour consistency 2 SDCM

IP rating IP20

Weight 1kg

Service Commitment

