

## ZTA.70.Mains Track.Zoom.N

STD-000473-0008

### Configured Product

Light Source

SL98

Light Source Size

6mm LES

CCT

3000K

Finish

TBC

Track adaptor colour

TBC

Dimming

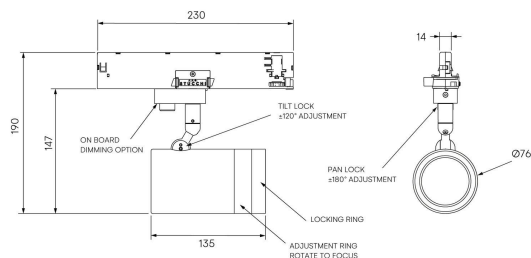
DALI

Attachments

None

Secondary Lensing Accessories

Without accessories



Modular high-performance, mains track-mounted spotlight system, for interior architectural applications such as Museums, Galleries, Retail and Workplace environments. Engineered for exceptional durability, maintainability, re-manufacturability, and recyclability, this spotlight sets a new standard for sustainable design.

## Product Description

ZTA.70.Mains Track.Zoom.N is constructed from extruded and precision-machined recycled aluminium, the spotlight features an anodised and powder-coated finish for enhanced durability and aesthetics. Compatible with 3-circuit adapters for 120-277V Stucchi, Eutrac, Global Pulse, and other track systems, this spotlight includes integral dimming control gear.

The spotlight can accommodate up to two lens accessories and multiple attachments, making it highly customisable for various lighting needs.

This version features a **variable zoom optic range of 17.2° to 58.5° maintaining excellent beam quality throughout.** With a high output of up to 1419lm and CRI up to 98, it delivers exceptional performance for focused, adjustable illumination.

ZTA.70.Mains Track.Zoom.N accommodates two lens accessories and multiple attachments, providing installation flexibility and user-driven control.

## Key Features

- Sustainable construction: made from recycled aluminium with durable anodised and powder-coated finishes. Specialist finishes available on request.
- Variable zoom: adjustable beam from 17.2° to 58.5°, with smooth optical transition and minimal artefacting.
- High-output performance: delivered lumens up to 1419lm and CRI up to 98.
- Versatile adjustment: 363° pan and 130° tilt with lockable spot.
- Broad compatibility: 3-circuit adapter works with multiple track systems (Stucchi, Eutrac, Global Pulse).
- Advanced dimming: local dim, DALI, 0-10V, and Wireless dimming options, down to 0.1%.
- Customisable accessories: supports up to two lens accessories and a range of optical add-ons.
- Ceiling mounting only: designed exclusively for ceiling-mounted track installations.

**STOANE LIGHTING**

EQUIPMENT DESIGN + MANUFACTURE

ZTA.70.Mains Track.Zoom.N

STD-000473-0008

Compliance



# Technical

Supply	230V/240V via 3 circuit track
Light source	6mm LES COB
Initial output	<p><b>SL90</b> 13.6W 34Vf at 400mA</p> <p>2700K · 1641lm · 121lm/W            3000K · 1710lm · 126lm/W            3500K · 1727lm · 127lm/W            4000K · 1773lm · 130lm/W</p> <p><b>SL98</b> 14.5W 36.4Vf at            400mA</p> <p>2700K · 1313lm · 90lm/W            3000K · 1403lm · 97lm/W            3500K · 1403lm · 97lm/W            4000K · 1481lm · 102lm/W</p>
Light distribution	<p>Narrow zoom extent 17.2°</p> <p>Wide Flood zoom extent            58.5°</p>
Lumen maintenance	L90 B0 in excess of 94,000 hours
Colour consistency	2 SDCM
IP rating	IP20
Weight	1kg

## Service Commitment

