

# STOANE LIGHTING

EQUIPMENT DESIGN + MANUFACTURE

## ZTA.100.Mains Track STD-000347-0001

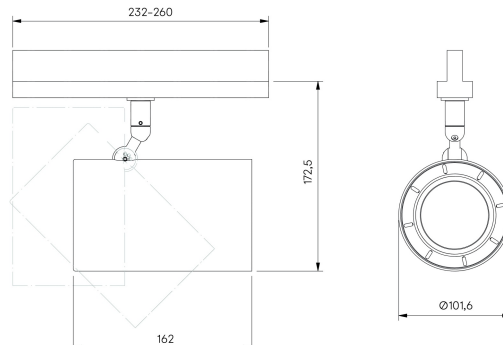
Modular high-performance, mains track-mounted spotlight system, for interior architectural applications such as Museums, Galleries, Retail and Workplace environments. Engineered for exceptional durability, maintainability, re-manufacturability, and recyclability, this spotlight sets a new standard for sustainable design.

### Product Description

ZTA.100.Mains Track is constructed from extruded and precision-machined recycled aluminium, the spotlight features an anodised and powder-coated finish for enhanced durability and aesthetics. Compatible with 3-circuit adapters for 120-277V Stucchi, Eutrac, Global Pulse, and other track systems, this spotlight includes integral dimming control gear.

### Key Features

- Sustainable construction: made from recycled aluminium with a long-lasting anodised and powder-coated finish. Specialist finishes available on request.
- Versatile adjustment: 363° pan rotation and 130° tilt with a lockable spot.
- Broad compatibility: 3-circuit adapter supports multiple track systems (Stucchi, Eutrac, Global Pulse).
- Advanced dimming options: on-board, DALI, 0-10V, and Wireless dimming, down to 0.1%.
- High-performance lighting: Up to 98 CRI LEDs with interchangeable optical systems.
- Customisable accessories: can house up to two lens accessories



# STOANE LIGHTING

EQUIPMENT DESIGN + MANUFACTURE

## ZTA.100.Mains Track STD-000347-0001

and various attachments.

- Ceiling mounting only: designed exclusively for ceiling installations.

# STOANE LIGHTING

EQUIPMENT DESIGN + MANUFACTURE

## ZTA.100.Mains Track STD-000347-0001

### Configured Product

CCT

Tuneable White sources available. Please contact us for more information.

TBC

CRI

TBC

Beam

TBC

Finish

Please contact us for custom finishing requirements.

TBC

Track adaptor colour

TBC

Dimming

TBC

Secondary Lensing Accessories

TBC