

STOANE LIGHTING

EQUIPMENT DESIGN + MANUFACTURE

Niche STD-000163-0012

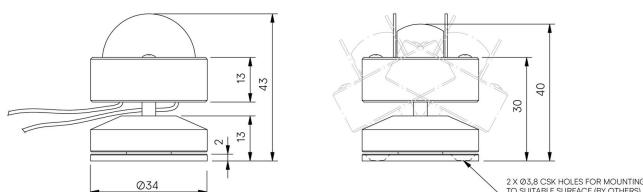
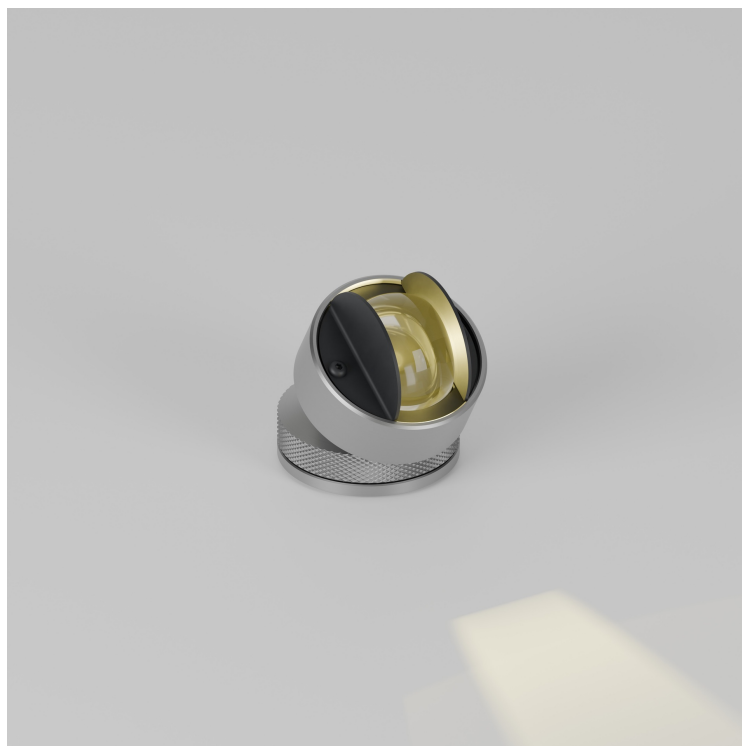
Linear framing system, for interior window reveals and architectural details.

Product Description

The Niche is a small form factor interior rated, adjustable and lockable linear framing light. Designed to produce a linear beam spread to illuminate window reveals and architectural details, the product is designed to be located in the centre of these details and is both adjustable and lockable with glare baffles. Constructed from precision-machined recycled aluminium, the product features an anodised and powder-coated finish for enhanced durability and aesthetics.

Key Features

- Sustainable construction: made from recycled aluminium with a weather resistant long-lasting anodised and powder-coated finish. Specialist finishes available on request.
- Small form factor with high efficiency beam distribution to frame window or architectural details.
- Adjustable and lockable system with glare control and custom mounting options available on request.
- Advanced dimming options: DALI, 0-10V, DMX and Wireless dimming, down to 0.1%.
- High-performance lighting: up to 97 CRI LEDs with interchangeable optical systems.



STOANE LIGHTING

EQUIPMENT DESIGN + MANUFACTURE

Niche STD-000163-0012

Configured Product

CCT

2700K

Finish

Please contact us for custom finishing requirements

TBC

Cable Length

500mm