

## Niche

STD-000163-0002

### Configured Product

CCT \_\_\_\_\_

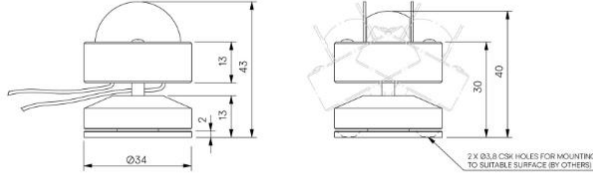
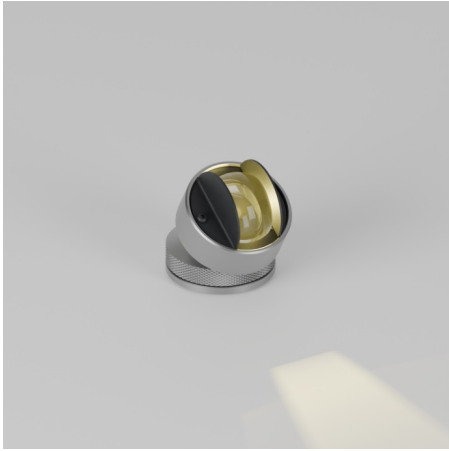
TBC

Finish \_\_\_\_\_

Anodised Clear

Cable Length \_\_\_\_\_

Custom



Linear framing system, for interior window reveals and architectural details.

## Product Description

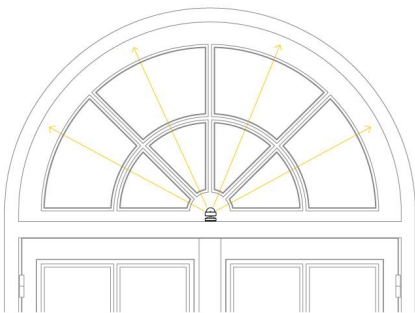
The Niche is a small form factor interior rated, adjustable and lockable linear framing light.

Designed to produce a linear beam spread to illuminate window reveals and architectural details, the product is designed to be located in the centre of these details and is both adjustable and lockable with glare baffles.

Constructed from precision-machined recycled aluminium, the product features an anodised and powder-coated finish for enhanced durability and aesthetics.

## Key Features

- Sustainable construction: made from recycled aluminium with a weather resistant long-lasting anodised and powder-coated finish. Specialist finishes available on request.
- Small form factor with high efficiency beam distribution to frame window or architectural details.
- Adjustable and lockable system with glare control and custom mounting options available on request.
- Advanced dimming options: DALI, 0-10V, DMX and Wireless dimming, down to 0.1%.
- High-performance lighting: up to 97 CRI LEDs with interchangeable optical systems.



## Compliance



## Technical

Supply	Remote constant current LED driver required
Light source	SL Star
Initial output	95CRI 2W 2.8Vf at 700mA  2700K · 179lm · 90lm/W 3000K · 192lm · 96lm/W 3500K · 204lm · 102lm/W 4000K · 219lm · 110lm/W
Light distribution	Linear 9.6° x 112.3°
Lumen maintenance	L70 B50 >66,000 hours
Colour consistency	2 SDCM
Colour maintenance	± 0.007 Δu'v'
IP rating	IP20
Weight	0.065kg

## Service Commitment

