

# STOANE LIGHTING

EQUIPMENT DESIGN + MANUFACTURE

## Drop Pendant STD-000046-0014

Pendant shade, for enhancing dining, workspace and feature areas.

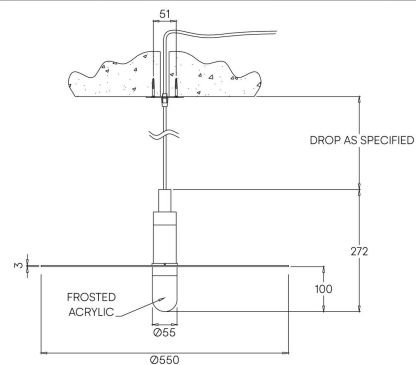
### Product Description

The Drop Pendant is a decorative pendant shade, engineered with a custom domed and frosted diffuser, to provide a soft and functional wash of light. Precision machined from recycled aluminium, including a decorative feature disc to enhance the light distribution. The product is height adjustable via a site cuttable suspension and power cable, with various cable colour options available.

It can be used individually or in clusters to create dynamic lighting arrangements.

### Key Features

- Sustainable construction: made from recycled aluminium.
- Height adjustable suspension with various cable colour options.
- A soft glow of light via the custom frosted diffuser.
- Advanced dimming options: DALI, 0-10V, DMX and Wireless dimming, down to 0.1%.
- High-performance lighting: up to 98 CRI LEDs.



## Drop Pendant STD-000046-0014

### Configured Product

Light source

Xicato XTM Artist series 19mm LES

CCT

3000K

CRI

95

Finish

Anodised Brass/Bronze

Mounting Method

Screw mount for direct fixing to mount surface. Bay Bar is for clamping to the mounting surface.

Screw

Cable Length

500mm