

STOANE LIGHTING

EQUIPMENT DESIGN + MANUFACTURE

Mole Type X STD-000033-0025

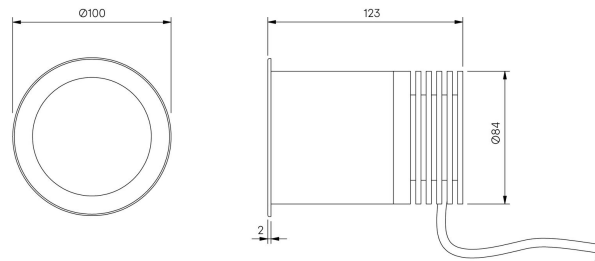
Exterior in-ground recessed fixed uplighter, for enhancing architectural details, gardens and pathways.

Product Description

The Mole Type X is a high output IP66 rated fixed exterior up light, designed to highlight textures, add depth to trees, sculptures, facades and other outdoor features. Perfect for both commercial and residential applications, ideal for bringing landscapes to life after dark.

Key Features

- Sustainable construction: made from recycled aluminium with a long-lasting anodised finish. Specialist finishes available on request. Includes toughened glass lens.
- Interchangeable optics to allow Very Narrow to Wide Flood with the addition of secondary lenses to create elliptical beam options.
- Advanced dimming options: DALI, 0-10V, and Wireless dimming, down to 0.1%.
- High-performance lighting: up to 98 CRI LEDs.
- First fix Installation sleeve available (separately) for mounting.



STOANE LIGHTING

EQUIPMENT DESIGN + MANUFACTURE

Mole Type X STD-000033-0025

Configured Product

Light source

9.8mm LES

CCT

3000K

CRI

90

Beam

Wide Flood 60.6°

Finish

Please contact us for custom finishing requirements

Anodised Clear

Mounting Method

First Fix Installation Sleeve (Specified Separately)

Secondary Lensing Accessories

With accessories