

STOANE LIGHTING

EQUIPMENT DESIGN + MANUFACTURE

Iris

STD-000029-0079

Configured Product

CCT _____

2700K

Beam _____

Flood 38.1°

Finish _____

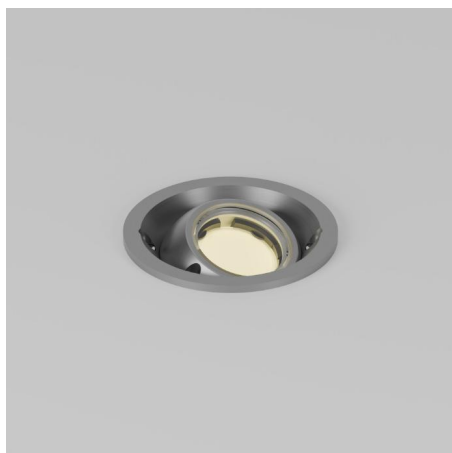
RAL 9010 Pure White

Attachments _____

None

Mounting Method _____

Spring Clip



Compact adjustable recessed lighting fixture for Museum, Gallery and Retail displays.

Product Description

The Iris is an IP66 rated adjustable compact recessed and highly efficient fixture designed to provide precise illumination for Museum, Gallery and Retail applications. Iris is suitable where an airtight seal is required.

Key Features

- Sustainable construction: made from recycled aluminium with a long-lasting anodised finish. Specialist finishes available on request.
- Fixed optics can be easily swapped from Very Narrow to Flood to elliptical beam options
- Snoot and Cowl options available.
- Advanced dimming options: DALI, 0-10V, DMX and Wireless dimming, down to 0.1%.
- High-performance lighting: Up to 97 CRI LEDs



STOANE LIGHTING

EQUIPMENT DESIGN + MANUFACTURE

Iris

STD-000029-0079

Compliance



Technical

Supply Remote constant current LED driver required

Light source SL Star

Initial output 95CRI 2W 2.8Vf at 700mA

2700K · 179lm · 90lm/W

3000K · 192lm · 96lm/W

3500K · 204lm · 102lm/W

4000K · 219lm · 110lm/W

Light distribution Very Narrow 8.5°
Narrow 12°
Medium 21.8°
Flood 38.1°
Wide Flood 59.5°
Elliptical 10.2° x 47.2°

Lumen maintenance L70 B50 >66,000 hours

Colour consistency 2 SDCM

Colour maintenance $\pm 0.017 \Delta u'v'$

IP rating IP66

Available tilt $\pm 22^\circ$

Cut out $\varnothing 44\text{mm}$

Weight 0.1kg

Service Commitment

