

STOANE LIGHTING

EQUIPMENT DESIGN + MANUFACTURE

Badger Type X STD-000027-0025

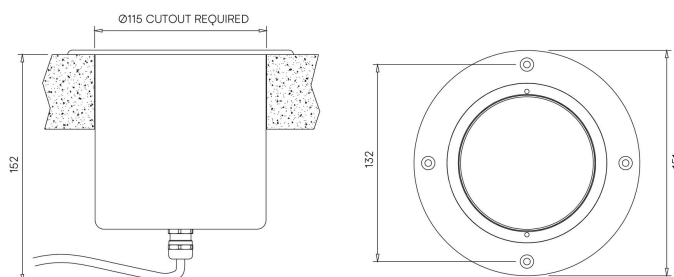
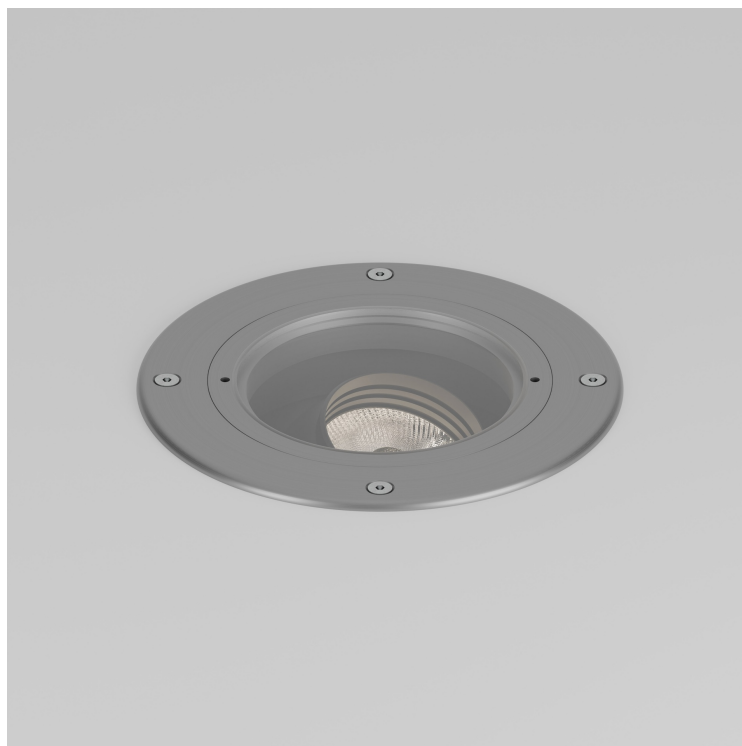
Exterior in-ground recessed adjustable and lockable uplighter, for enhancing architectural details, gardens and pathways.

Product Description

The Badger Type X is a high output IP66 rated adjustable and lockable exterior up light, designed to highlight textures, add depth to trees, sculptures, facades and other outdoor features. Perfect for both commercial and residential applications, ideal for bringing landscapes to life after dark. Machined from recycled aluminium with an anodised finish for enhanced durability and a toughened glass lens.

Key Features

- Sustainable construction: made from recycled aluminium with a weather resistant long-lasting anodised and powder-coated finish. Specialist finishes available on request.
- Adjustment providing up to +/- 25° of tilt and 360° of pan rotation with locking mechanism.
- Interchangeable optics to allow Very Narrow to Wide Flood with the addition of secondary lenses to create elliptical beam options.
- Advanced dimming options: DALI, 0-10V, and Wireless dimming, down to 0.1%.
- High-performance lighting: Up to 98 CRI LEDs.
- First fix installation sleeve available for mounting.



STOANE LIGHTING

EQUIPMENT DESIGN + MANUFACTURE

Badger Type X STD-000027-0025

Configured Product

Light source

9.8mm LES

CCT

2700K

CRI

90

Beam

Narrow 18.3°

Finish

Please contact us for custom finishing requirements

Anodised Clear

Mounting Method

Adhesive by others

Secondary Lensing Accessories

With accessories