

Interior LED Channel

STD-000022-0052

Configured Product

LED _____

SL G3.2 Strip Standard Output

CCT _____

3000K

Length _____

1000mm

Finish _____

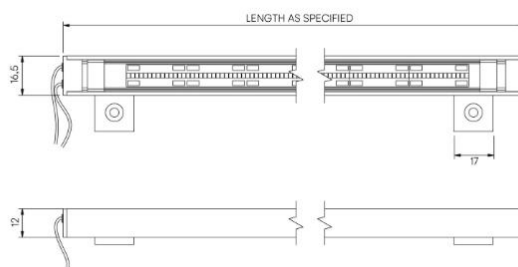
Anodised Clear

Mounting Method _____

Mount tab

Diffuser _____

Frosted



Linear lighting system, typically for accent lighting and integration into interior architectural details.

Product Description

This Interior LED channel is a low-profile system designed for indirect high level cove lighting and integration into joinery and furniture providing a seamless lighting effect that enhances architectural details.

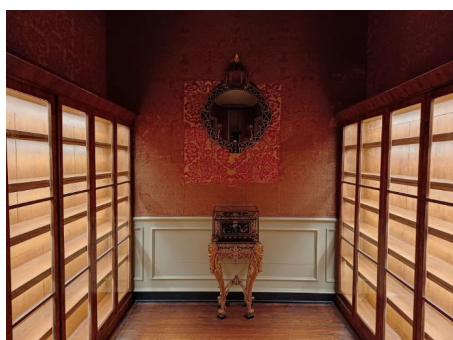
The innovative extrusion design allows for ease of installation and the product can be offered with either a frosted diffuser with a soft glow effect, or a clear cover for higher output applications.

Custom glare baffles and clamping system options available on request.

Extruded from recycled aluminium with an anodised finish for enhanced durability.

Key Features

- Sustainable construction: made from recycled aluminium.
- Innovative mounting system allowing for ease of installation and maintenance.
- High and lower output options available with a custom frosted diffuser for a soft lit effect or clear cover for higher output applications.
- Advanced dimming options: DALI, 0-10V, DMX and Wireless dimming, down to 0.1%.
- High-performance lighting: up to 90 CRI LEDs.



Compliance



Service Commitment



Technical

Light Source

Standard Output LED Strip

90 CRI

1496lm/m initial output at 3000K
89lm/W

High Output LED Strip

90 CRI

2702lm/m initial output at 3000K
86.6lm/W

Light

Distribution

Clear cover 103.4° x 115.1°

Diffuser 112.4° x 110.6°