

## Billet

STD-000016-0053

### Configured Product

LED \_\_\_\_\_

SL G3.2 Strip Standard Output

CCT \_\_\_\_\_

3000K

Length \_\_\_\_\_

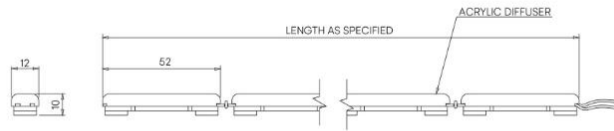
Custom Length

Mounting Method \_\_\_\_\_

Magnet

Diffuser \_\_\_\_\_

Frosted



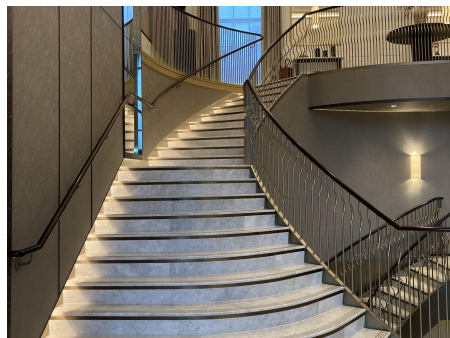
Flexible, modular linear lighting system for cove and handrail lighting applications.

## Product Description

The Billet is a compact flexible linear lighting system, engineered to provide both subtle accent lighting or deliver brighter illumination within cove or handrail lighting applications. Its compact minimalist form allows it to blend invisibly within architectural structures and it provides a soft wash of light via it's custom frosted diffuser. The innovative design allows for ease of installation and maintenance via magnetic mounting pads and the modular componentry allows for ease of re-manufacturability versus typical flexible linear solutions.

## Key Features

- Sustainable construction: made from recycled aluminium.
- Modular design allowing for ease of remanufacture versus typical flexible linear solutions.
- Innovative magnetic mounting system allowing for ease of installation and maintenance.
- High and low output options available with a custom frosted diffuser for a soft lit effect.
- Advanced dimming options: DALI, 0-10V, and Wireless dimming, down to 0.1%.
- High-performance lighting: up to 90 CRI LEDs.



## Compliance



## Electrical

**Supply** Remote constant voltage 24V DC PSU required

<b>Power</b>	<b>Standard Output LED Strip</b>	<b>High Output LED Strip</b>
	0.42W per Billet	0.78W per Billet
	24V	24V

## Technical

Light Source

**Standard Output LED Strip**  
90 CRI  
per Billet (25mm lit length)  
37lm initial output at 3000K 89lm/W

**High Output LED Strip**  
90 CRI  
per Billet (25mm lit length)  
67lm initial output at 3000K 86.6lm/W

Light Distribution

Diffuse 111.4° x 93.8°

## Service Commitment

