

STOANE LIGHTING

EQUIPMENT DESIGN + MANUFACTURE

FXD Type S STD-000015-0019

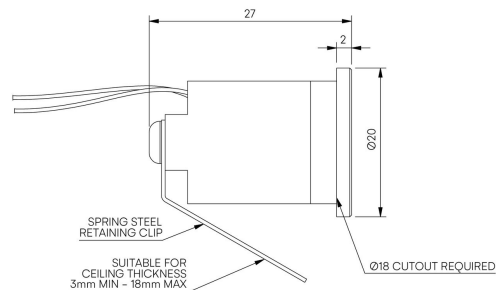
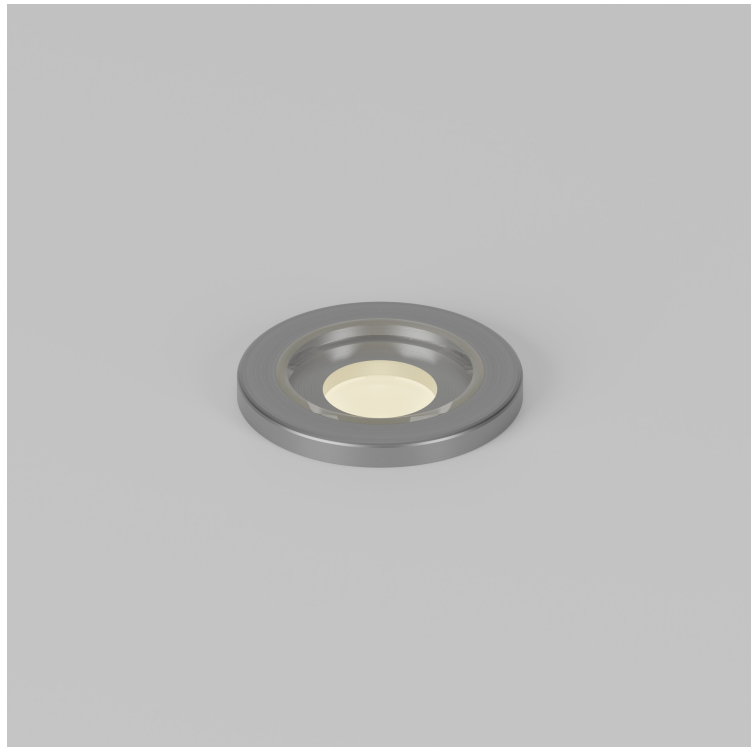
Miniature exterior recessed fixed focus downlight, for enhancing exterior architectural details.

Product Description

The FXD Type S is a miniature IP65 rated fixed exterior downlight. Machined from recycled aluminium with an anodised finish for enhanced durability and a toughened glass lens.

Key Features

- Sustainable construction: made from recycled aluminium with a long-lasting anodised finish. Specialist finishes available on request.
- Interchangeable optics to allow Medium to Wide Flood to elliptical beam options.
- Advanced dimming options: DALI, 0-10V, and Wireless dimming, down to 0.1%.
- High-performance lighting: up to 97 CRI LEDs.



STOANE LIGHTING

EQUIPMENT DESIGN + MANUFACTURE

FXD Type S STD-000015-0019

Configured Product

CCT

2700K

Beam

Wide Flood 68.9°

Finish

Please contact us for custom finishing requirements

TBC

Mounting Method

Mounting TBC