

# STOANE LIGHTING

EQUIPMENT DESIGN + MANUFACTURE

## BPX STD-000012-0056

Modular, high-performance spotlight system, for ceiling, wall and tabletop lighting applications.

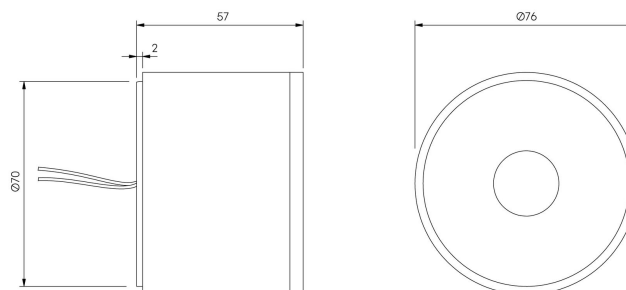
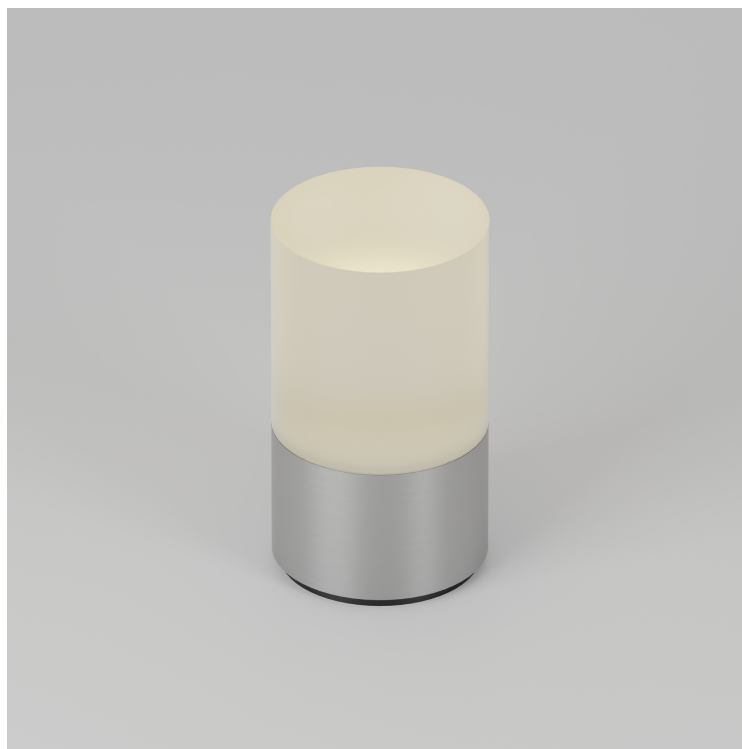
### Product Description

The BPX is a compact, minimal and modular lighting system that can be easily adapted. BPX is often the building block from which custom fittings are built.

Engineered to accommodate both fixed interchangeable optics with additional lensing accessories, or decorative frosted diffuser options. Constructed from extruded and precision-machined recycled aluminium, the spotlight features an anodised and powder-coated finish for enhanced durability and aesthetics.

### Key Features

- Sustainable construction: made from recycled aluminium with a long-lasting anodised and powder-coated finish. Specialist finishes available on request.
- Fixed optics can be easily swapped to decorative frosted diffuser options.
- Advanced dimming options: DALI, 0-10V, DMX and Wireless dimming, down to 0.1%.
- High-performance lighting: up to 98 CRI LEDs with interchangeable optical systems.
- Capable of ceiling, wall and table mounting.



# STOANE LIGHTING

EQUIPMENT DESIGN + MANUFACTURE

## BPX STD-000012-0056

### Configured Product

Light source

6mm LES

CCT

2700K

CRI

90

Beam

BPX can be specified with either a technical optic or with a decorative acrylic diffuser (see options below)

Wide Flood 56°

Finish

Please contact us for custom finishing requirements.

RAL 9010 Pure White

Dimming

Driver specific

Diffuser

Frosted

Secondary Lensing Accessories

With accessories