

SL90 3500K 9mm

Date: 03/09/2025

Instrument Used: Viso Systems Labspion Goniometer.

Reference Lamp: BLV 105151 12V 50W 760lm 3000K 36°

The colour information contained in this report is based on the testing of a single sample of the Light source we use in our products at typical operating temperature, testing is done with our Goniophotometer under controlled conditions.

The performance of a light source can be altered very slightly when in a luminaire due to the qualities of the optical system, such as material used for the optic construction.

This information is intended to be used in addition to further technical information, such as light source brand, part number and electrical information, which can be provided for, and may be relevant to, your project specification. Please contact sales@mikestoanelighting with information requests.

Light quality:

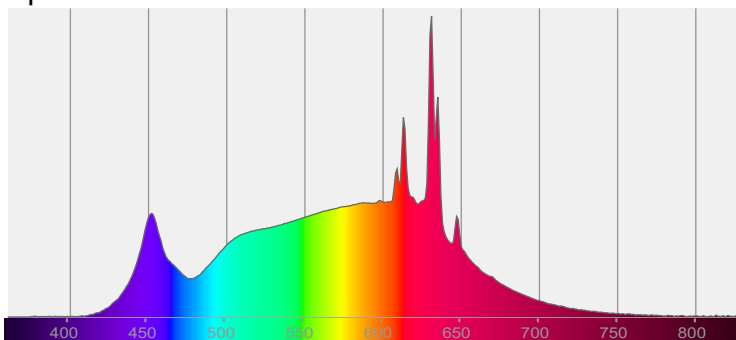


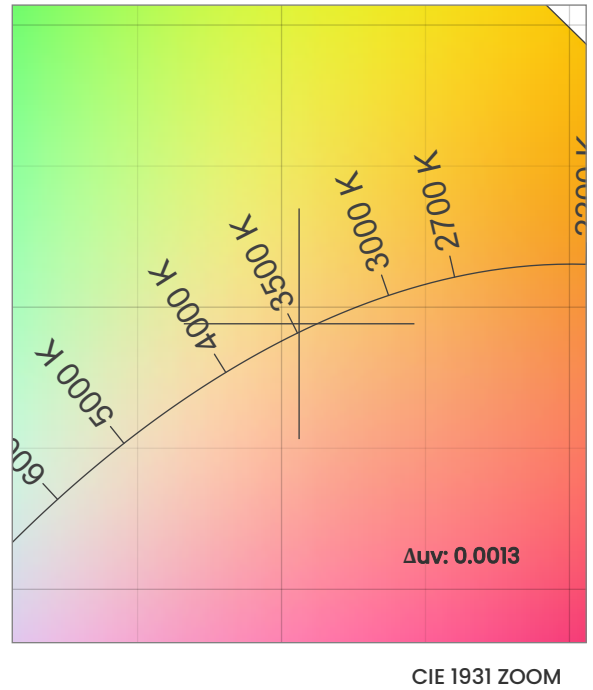
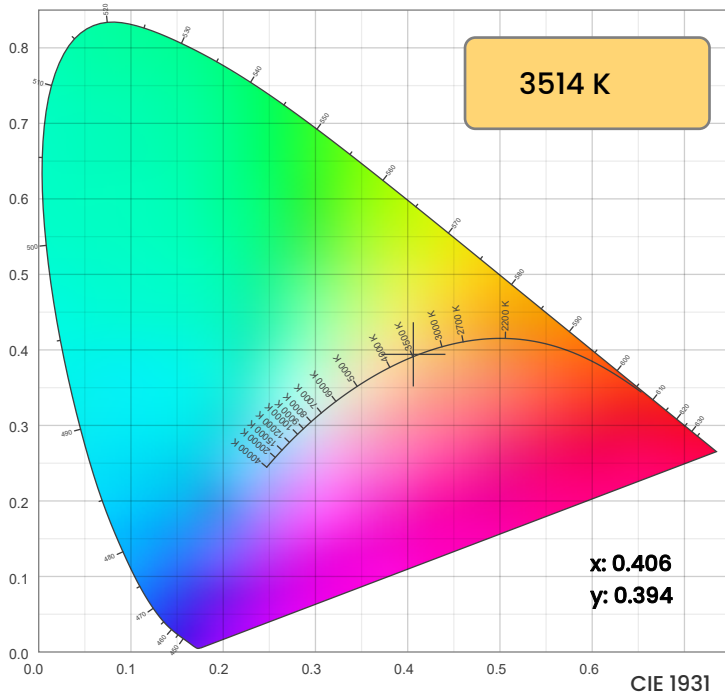
Colour temperature:



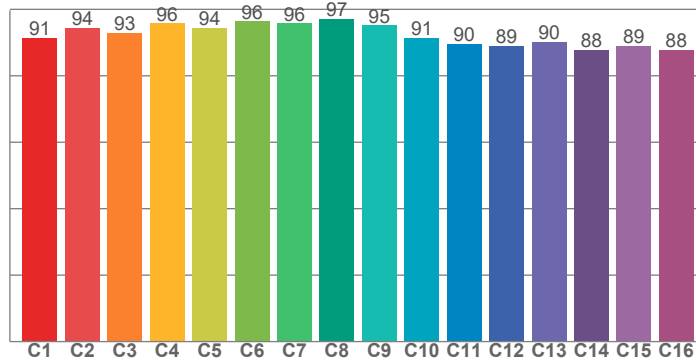
CIE 1931
x: 0.406
y: 0.394

Spectra

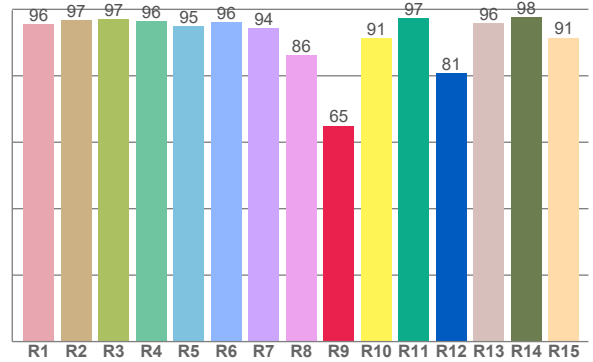




TM30: 92.6



CRI: 94.7 (R1-R8)



CRI R values, only R1-R8 are used to calculate final CRI value

R1	R2	R3	R4	R5	R6	R7	R8	R9	R10	R11	R12	R13	R14	R15
95.6	96.7	97.0	96.4	95.0	96.1	94.3	86.3	65.0	91.2	97.3	80.7	95.8	97.5	91.4

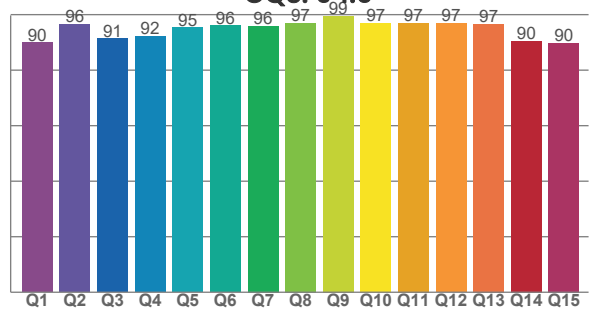
TM30 C values, 16 binned values out of total of 99 C values

C1	C2	C3	C4	C5	C6	C7	C8	C9	C10	C11	C12	C13	C14	C15	C16
91.4	94.4	93.0	95.8	94.5	96.4	95.7	97.2	95.1	91.5	89.6	89.0	90.2	87.8	89.1	87.8

CQS Q values

Q1	Q2	Q3	Q4	Q5	Q6	Q7	Q8	Q9	Q10	Q11	Q12	Q13	Q14	Q15
89.9	96.5	91.4	92.2	95.4	96.1	95.9	97.0	99.4	97.0	96.9	96.9	96.7	90.4	89.9

CQS: 94.0



Colour parameters

Colour temperature	Colour rendering index	Red component	Colour fidelity	Colour gamut	Colour quality scale	Colour coordinate cie 1931	Colour coordinate cie 1931	Colour coordinate	Colour coordinate	Colour deviation from black body
CCT	CRI	CRI R9	TM30 Rf	TM30 Rg	CQS	x	y	u	v	Δuv
3514 K	94.7	65.0	92.6	99.0	94.0	0.406	0.394	0.235	0.342	0.0013

TM30 details

Rf 92.6
Fidelity index

Rg 99.0
Gammut

Hue Bin	R _f	Graphic shifts (%)	
		Chroma	Hue
1	91	-5%	0%
2	94	-3%	1%
3	93	-1%	3%
4	96	-1%	1%
5	94	-2%	2%
6	96	1%	1%
7	96	-1%	0%
8	97	0%	1%
9	95	-1%	3%
10	91	-1%	5%
11	90	3%	6%
12	89	5%	-1%
13	90	2%	-7%
14	88	4%	-9%
15	89	-1%	-7%

