



All of our in-house printed paper
is 100% recycled and recyclable

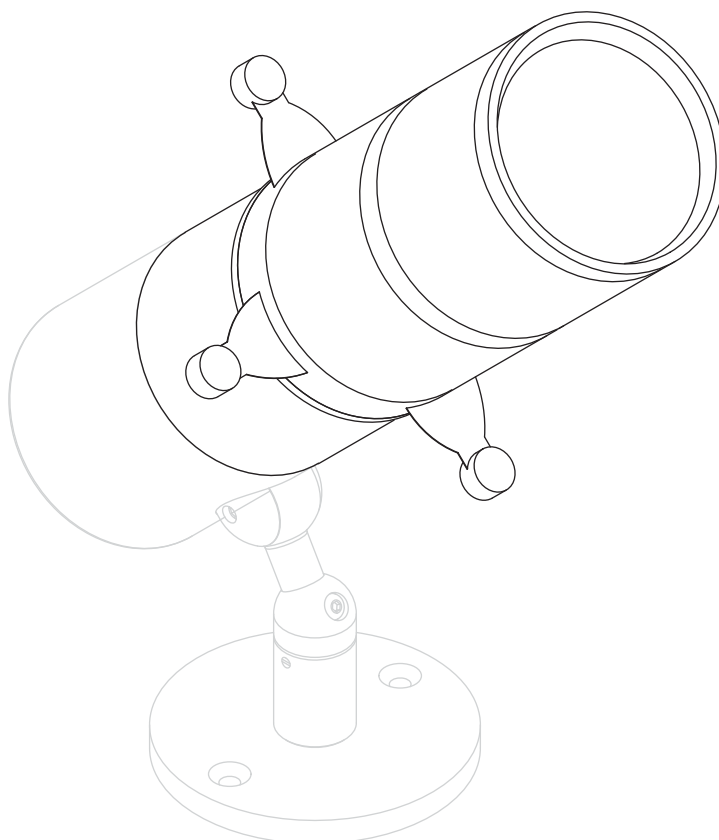
STOANE LIGHTING

EQUIPMENT DESIGN + MANUFACTURE



ZTA.50 Framing Kit – Adjustable Beam

Installation and Maintenance Instructions



These instructions are for reference only. For product-specific instructions, which may vary, please refer to the documentation supplied with your order.

IMPORTANT: All wiring connections must be made before applying power.



Do not stare at the operating light source



This product should not be disposed of in your general waste



Please retain these instructions for future reference

IP20 Indoor Use Only

t_a 35°C Rated maximum ambient temperature

CE European Conformity

UKCA UKCA (UK Conformity Assessed)

Stoane Lighting
20 Dryden Road Bilston Glen Ind Est.
Loanhead Midlothian EH20 9LZ UK

T: +44 (0) 131 440 1313
sales@mikestoanelighting.com

www.stoanelighting.com
VAT No GB682885284
Limited Company 188910

STOANE LIGHTING

EQUIPMENT DESIGN + MANUFACTURE

Electrical Supply

Installation must be carried out by a suitably qualified electrician following current building and wiring regulations of the region of installation.

Refer to the fitting label for the module version and total wattage.

Module information;
For module information, including supply current/voltage please refer to the product label or the instructions supplied with your fitting.

The energy efficiency class of the LED is available in the instructions supplied with your fitting.

Maintenance:

All lighting equipment is delicate and easily damaged through misuse or inappropriate installation (mechanical or electrical). Repairs and replacements may cause delays and will be chargeable. Contact SL for support if required.

All Stoane Lighting products are covered by a five year Warranty and a 25 year Duty of Care. Products are designed to be upgraded, adapted and refreshed using our comprehensive ReNew service. For more information on our ReNew service and for full Warranty terms and conditions visit stoanelighting.com or contact us at the address shown.

Cleaning:

Fully isolate the fitting and allow to cool.

Clean the fitting with a slightly damp lint free cloth from a mild solution of soap and water. The fitting must be completely dry before reconnecting power.

Incompatible or abrasive chemicals can damage the fitting, contact SL for advice if required.

Installation

This framing kit is an accessory for the ZTA.50 product line from Stoane Lighting. It is designed for use with a Ø6mm or Ø9.8mm LES (light emitting surface).

This accessory should be mounted out of arms reach to prevent unauthorized adjustment.

Step 1 Isolate the fitting from the supply and allow to cool. Remove the lamptube and optic from the ZTA.50 fitting heatsink.

Take care not to touch the LED as it is easily damaged.

Secure the framing kit in place by fully screwing the framing coupler onto the heatsink.

Step 2 Apply power to the fitting. Ensure that the frame is projected onto the lit surface in the correct orientation. If required, adjust by holding the framer's front as indicated and turning the Framer Coupler up to a quarter turn to loosen. Rotate the front section to get the desired orientation, once the correct output is achieved, tighten the coupler to lock in position.

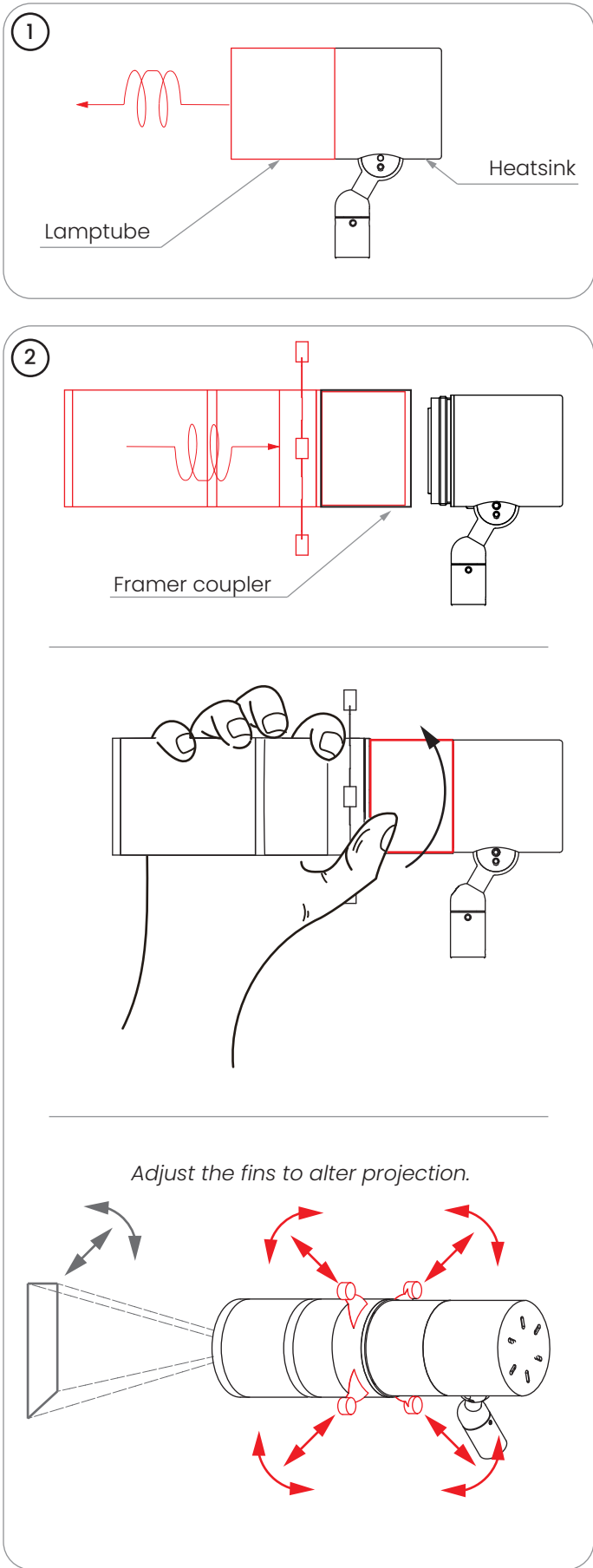
The output "square" projection can be altered by adjusting the fins on the framing optic.

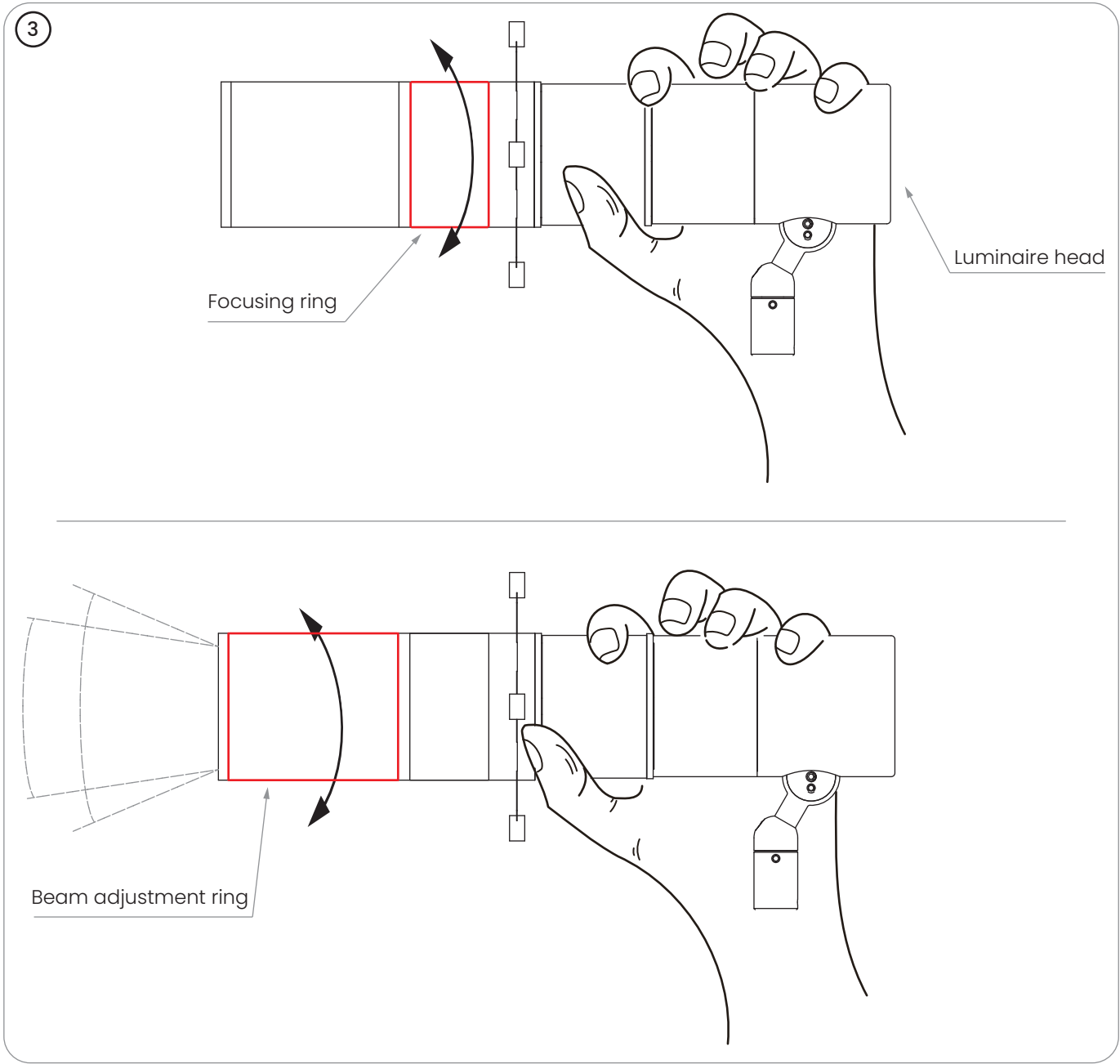
Step 3 The focus of the Framer can be adjusted by holding the head of the ZTA.50 while twisting the focusing ring.

Rotate the 'beam adjustment ring' to change the angle of the beam as required.

WARNING: Do not look at exposed LED lamps in operation. Eye injury can result.

Additional items should not be hung or suspended from this fitting. SL takes no responsibility for additional items added by others or the consequences of those items.





Add/ Remove Gobo holder:

Ensure the fitting is isolated from electrical supply and the environment is dust free before adding or removing the gobo holder.

The use of antistatic gloves is recommended when handling the framing accessory.

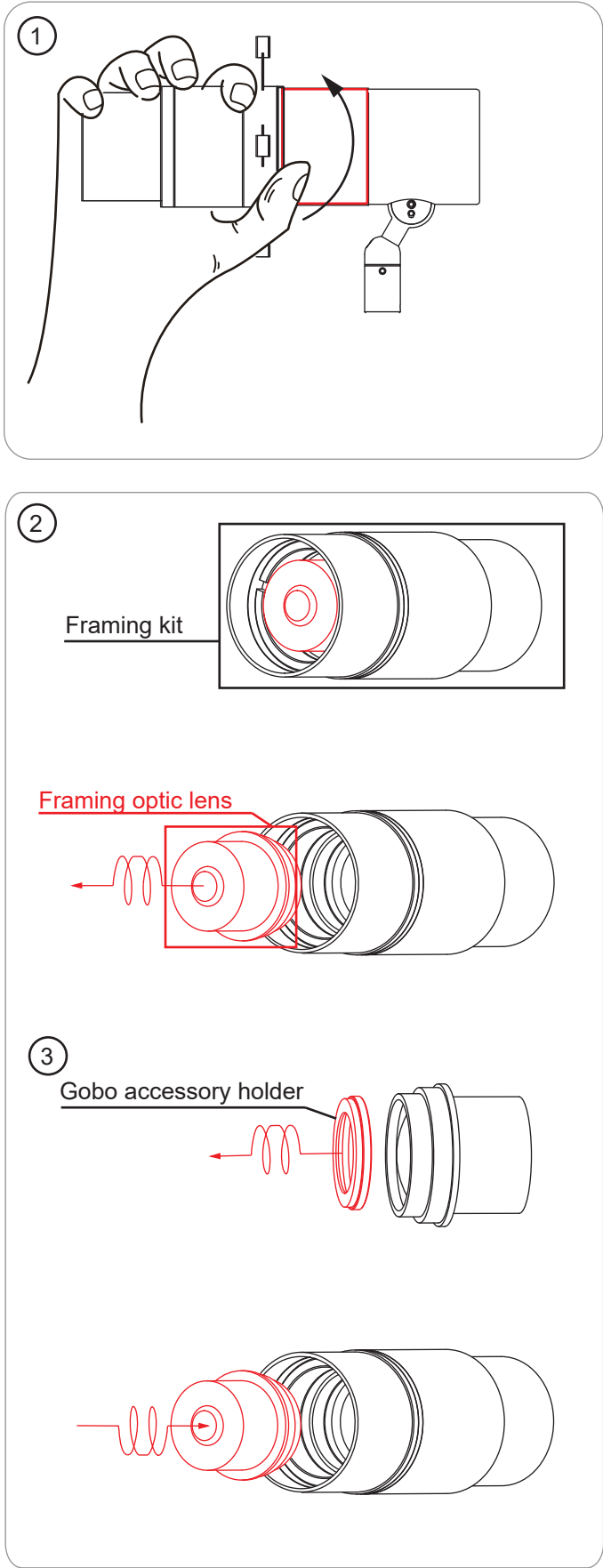
Failure to adhere to the above may impair the quality of the projector.

Step 1 Push the framing fins into the closed position before removing the Framing kit from the fitting.

Step 2 Carefully unscrew the Framing optic lens. *Note that this is a sensitive optical component and it must be handled with care.*

Step 3 Carefully screw the Gobo accessory holder into the Framing optic lens before reassembling all components. *Ensure all components are fully tightened and secure once reassembled.*

The Framing kit may be screwed back onto the fitting following the installation instructions. Ensure the framing fins still operate smoothly. It may be necessary to repeat the operation and unscrew the gobo accessory holder slightly if the Gobo projection cannot be focused.



STOANE LIGHTING

EQUIPMENT DESIGN + MANUFACTURE

Certified



Stoane Lighting firmly believe that we have a responsibility as environmental custodians, we believe that lighting equipment should be built to last, to be repaired and to be reused. As a BCorp we have pledged to operate a business not aiming to just be best in the world but a business best for the world. Stoane Lighting believe that the circular economy is a fundamental aspect of how we approach the challenges we face. If you read this at the end of the product life we encourage you to consider how you can ensure this product sees an extended life. If removal is unavoidable, please see the disassembly note below.

All Stoane Lighting products are supplied with a 5 year warranty and a 25 year duty of care.



Stoane Lighting operate a ReNew division, which can take your existing fittings and refurbish or upgrade without the need for replacing what you already have.



Through the ReNew service, Stoane Lighting provides general repair, deep cleans and electrical safety checks on luminaires, as well as possible repainting if needed. We will replace components that are nearing end of life, such as drivers, LEDs, and optics. If the fittings are to be used in a new area, or the existing space is undergoing a change in use, ReNew can offer a different mounting method or light technical performance (such as colour tuning), if needed, alongside the addition of on-board wireless control. ReNew as a service, depending on location, can be done on site or by returning equipment to Stoane Lighting.

Once fittings have been repaired or upgraded through ReNew, they will start a new five-year warranty period, and any unwanted parts will be recycled.



Product Disassembly and Component Recycling - While every effort has been made to ensure that our products are built to last and are ReNewable, there may come a point when, as a very last resort, the fittings need to be recycled. The Stoane Lighting website will provide information on how the fitting can easily be disassembled into its component parts for more effective recycling. Information on recycling services in your local region can also be supplied on request.

For more information on the above please visit stoanelighting.com or contact us at the address shown.