

# STOANE LIGHTING

EQUIPMENT DESIGN + MANUFACTURE

## ZTA.50.Downlight STD-000235-0020

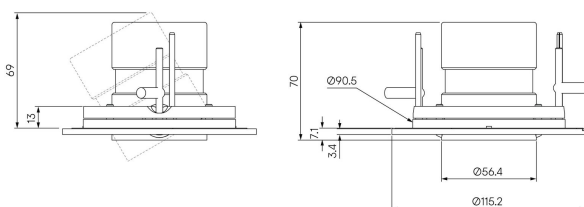
Modular high-performance, recessed adjustable downlight, for interior architectural applications such as Museums, Galleries, Retail and Workplace environments. Engineered for exceptional durability, maintainability, re-manufacturability, and recyclability, this spotlight sets a new standard for sustainable design.

### Product Description

ZTA.50.Downlight is constructed from extruded and precision-machined recycled aluminium, the spotlight features an anodised and powder-coated finish for enhanced durability and aesthetics.

### Key Features

- Sustainable construction: made from recycled aluminium with a long-lasting anodised and powder-coated finish. Specialist finishes available on request.
- High-performance lighting: up to 98 CRI LEDs with interchangeable optical systems.
- Customisable accessories: can house up to two lens accessories and various attachments.
- Advanced dimming options: DALI, 0-10V, DMX and Wireless dimming, down to 0.1%.



# STOANE LIGHTING

EQUIPMENT DESIGN + MANUFACTURE

## ZTA.50.Downlight STD-000235-0020

### Configured Product

Light source

9mm LES

CCT

Tuneable White sources available. Please contact us for more information.

3000K

CRI

90

Beam

Narrow 17.4°

Finish

Please contact us for custom finishing requirements

RAL 9010 Pure White

Dimming

Driver specific

Attachments

Straight/Slash Cut Snoot (specified separately)

Secondary Lensing Accessories

With accessories